










RESTORATION HARDWARE

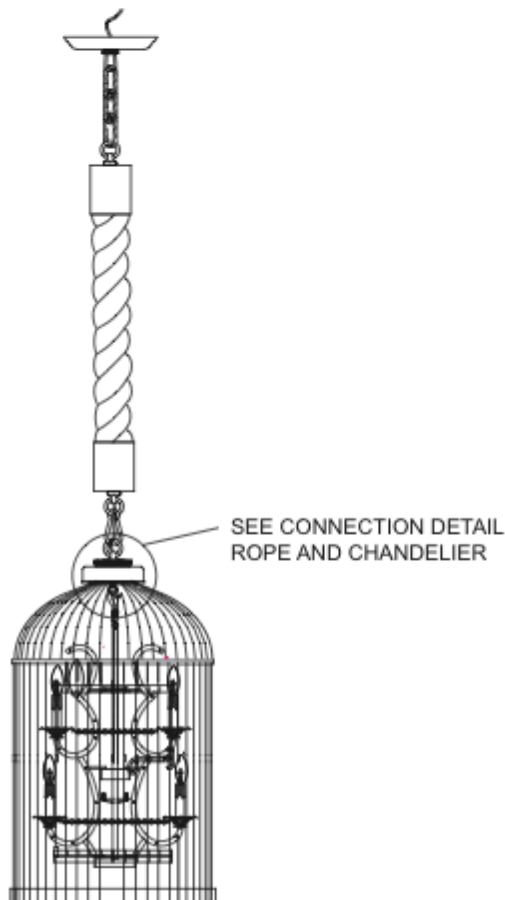
Thank you for purchasing Restoration Hardware Lighting. Our assortment is crafted with the highest quality details in mind and each collection is clad in one of our signature finish options. Each item's surface is sealed which eliminates the need for polishing and ensures the lasting brilliance of your piece for years to come.

PARTS:

ITEM	DIAGRAM	DESCRIPTION	QTY
(A)		OUTLET BOX (not included)	
(B)		TOGGLE	4
(C)		FIXTURE STUD	1
(D)		SCREW	4
(E)		HICKEY	1
(F)		THREADED TUBE	1
(G)		CANOPY	1
(H)		COLLAR	1
(I)		LOOP	1

VINTAGE BIRDCAGE MD CHANDELIER

Direct Wire Installation



IMPORTANT SAFETY INSTRUCTIONS:

These instructions are provided for your safety. It is very important that they are read completely before beginning the installation of your fixture.

Turn off electricity at the main circuit breaker panel before beginning installation .

This direct wire fixture must be installed by a certified and licensed electrician. Customer should not attempt to install.

This fixture has been rated for up to one (1) 25W candelabra base bulb per socket. To avoid risk of fire, do not exceed the recommended wattage.

If any special control devices are used with this fixture, follow the instructions carefully to assure full compliance with the N.E.C. requirements. If there are any questions, contact a licensed electrical contractor.

WARNINGS:

All wires are connected. When unpacking, be careful not to pull wires as a bad connection may result. Do not connect electricity until your lamp is fully assembled.

To reduce the risk of fire, electrical shock, or personal injury, always turn off lamp and allow it to cool prior to replacing light bulb.

Do not touch bulb when fixture is turned on or look directly at lit bulb. Keep flammable materials away from lit bulb.

TO ASSEMBLE:

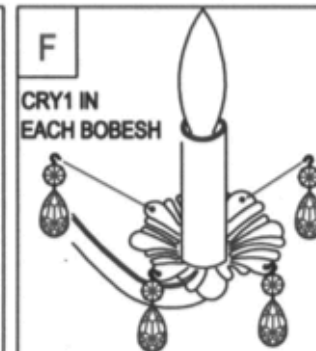
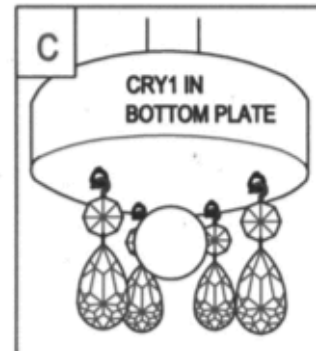
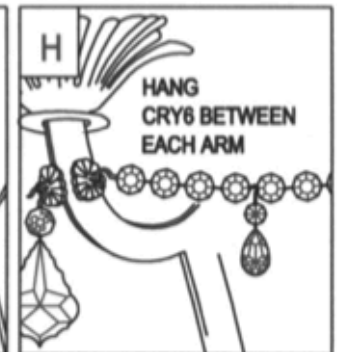
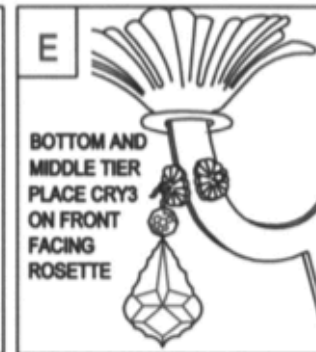
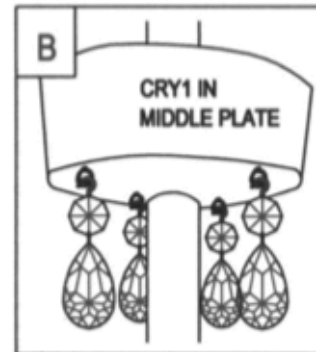
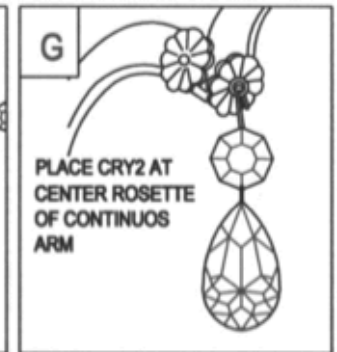
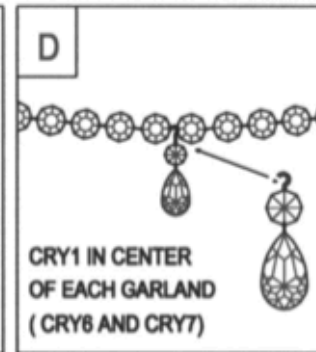
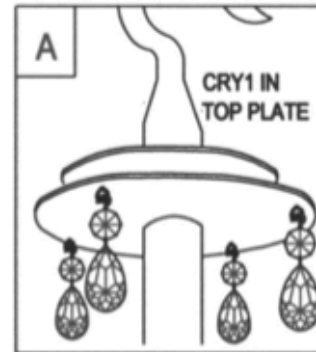
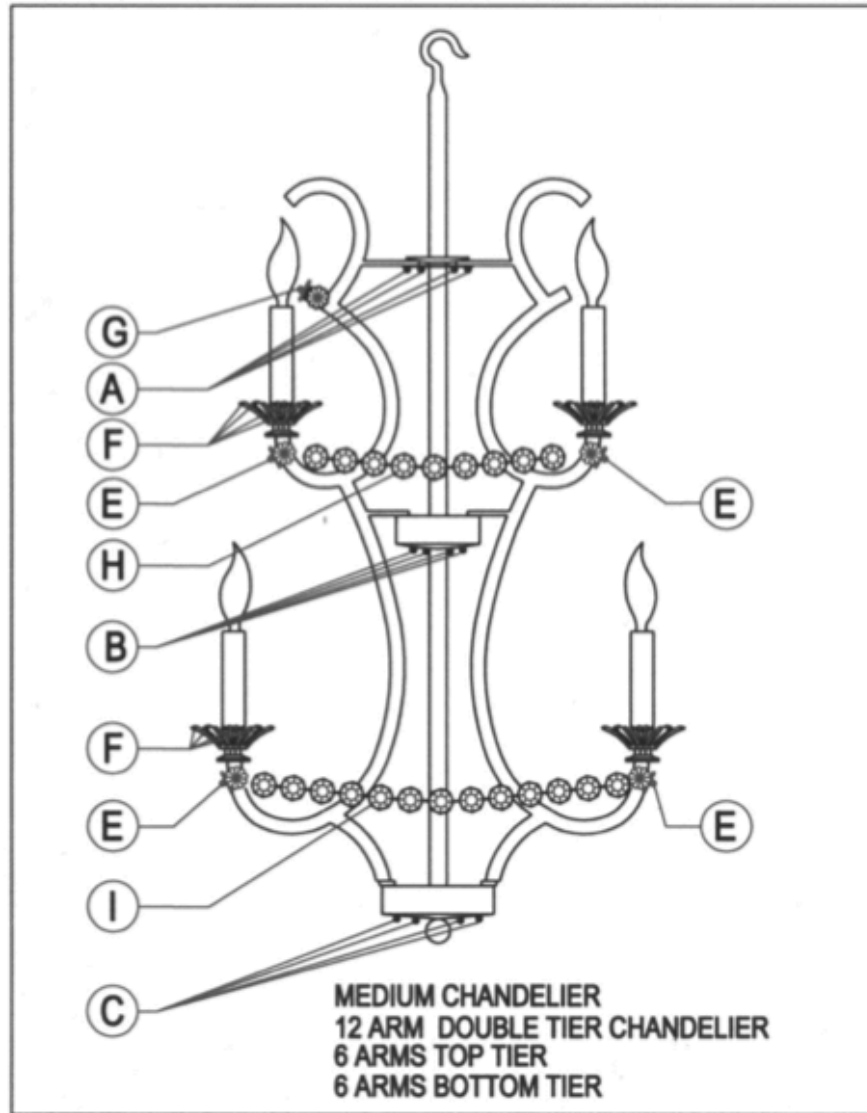
1. Shut of electrical supply at main fuse box / circuit breaker. A licensed electrician should install this fixture.
2. Attach Fixture Stud(C)to ceiling beam through outlet box (A).Have professional contractor reinforce ceiling.
3. Pull wires from ceiling outlet box(A) and make proper electrical connections described in step 8-10
4. Slide Canopy(G) up until snug against ceiling.
5. Screw Collar(H) on Threaded tube(F).
6. Screw Loop (I) on Collar(H).
7. Attach ground wire from fixture to ground wire from outlet box.
8. Attach hot wire from fixture to hot wire from outlet box.
9. Attach neutral wire from fixture to neutral wire from outlet box.
10. Insert 12 pcs bulbs (included) into the sockets.
11. Please see additional instructions for hung crystal and garland.

CARE INSTRUCTIONS:

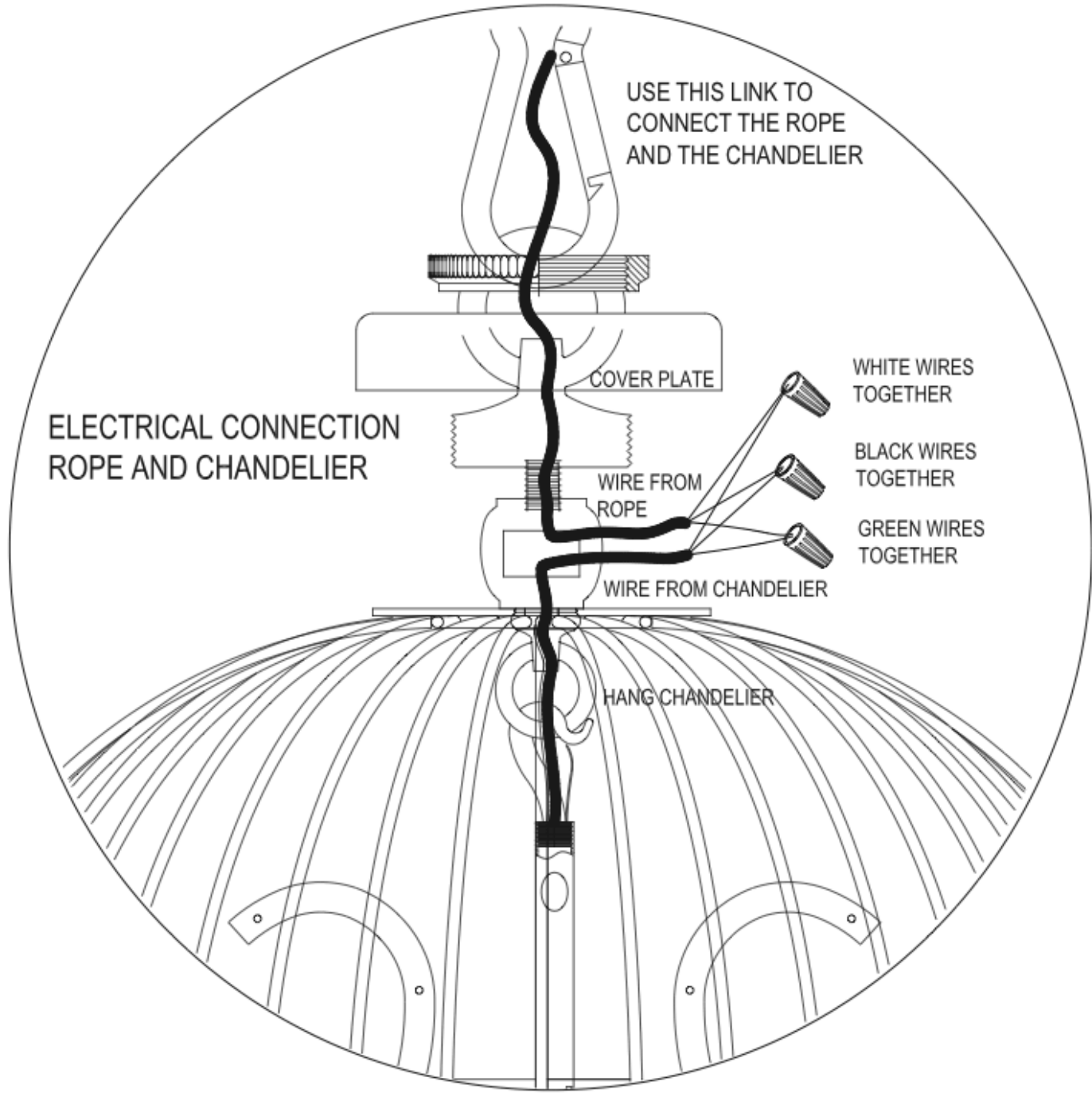
Do not use polishes or cleaners on your lamp.

JUST WIPE CLEAN WITH SOFT CLOTH.

MEDIUM CHANDELIER- INSTRUCTIONS FOR HANGING CRYSTALS & GARLAND



CRY1	CRY2	CRY3	CRY6	CRY7
72 PCS	6 PCS	12 PCS	6 PCS	6 PCS



USE THIS LINK TO
CONNECT THE ROPE
AND THE CHANDELIER

ELECTRICAL CONNECTION
ROPE AND CHANDELIER

COVER PLATE

WIRE FROM
ROPE

WIRE FROM CHANDELIER

HANG CHANDELIER

WHITE WIRES
TOGETHER

BLACK WIRES
TOGETHER

GREEN WIRES
TOGETHER